

Dummy that reproduces the natural breathing motion, body size and shape of a newborn baby. This piece of test equipment is used to evaluate automotive child detection technologies. Furthermore, this dummy is able to achieve every breathing rate, selectable individually and per definition of the Euro NCAP protocol.

- Realistic chest displacement
- All electronics, processors and control components outside of the dummy
- Adjustable breathing rate
- Metal-free design – no radar interferences
- Realistic, static radar signature
- Easy operation via a mobile phone web app
- Portable, fast and easy set-up

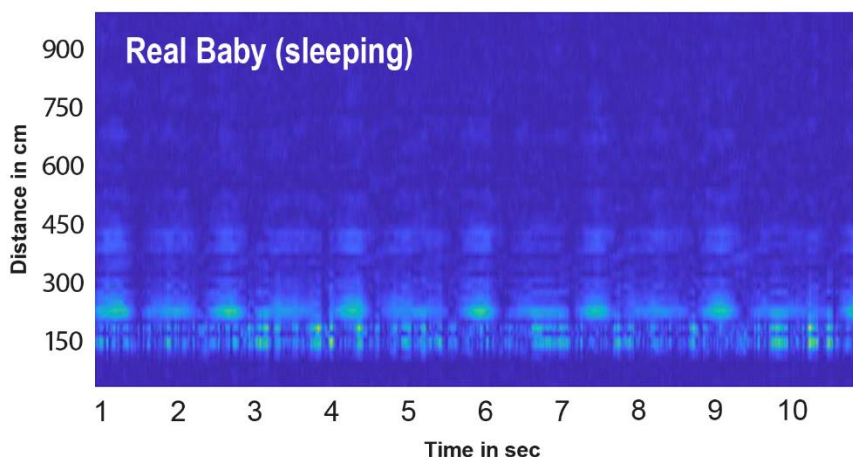
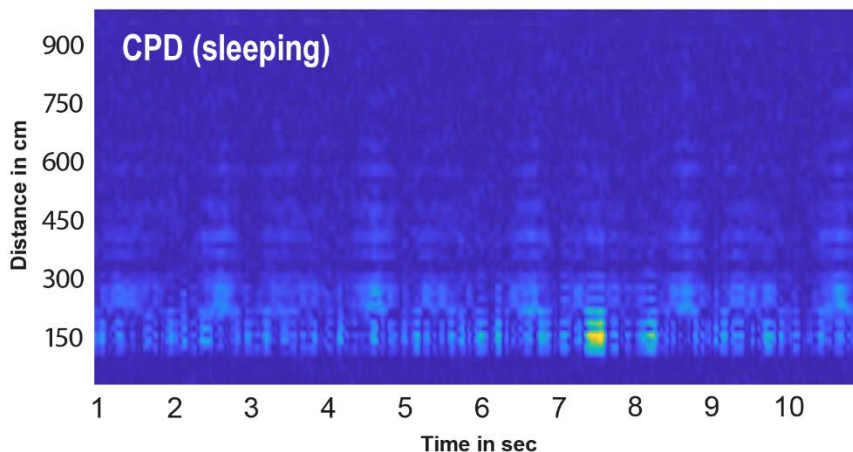


Figure 1: Comparison of reflective properties of CPD with rc10 cover material and real baby (sleeping), recorded with broadband 7Ghz

TECHNICAL SPECIFICATIONS

DUMMY BODY

Weight	2 kg
Body height	550 mm \pm 10 mm
Shoulder width	150 mm \pm 10 mm
Head circumference	370 mm \pm 10 mm
Chest circumference	340 mm \pm 10 mm
Material	Metal-free, soft-touch surface

CONTROL AND SUPPLY BOX

Weight	32 kg
Dimensions (L x W x H)	816 mm x 540 mm x 426 mm

- Scope of supply**
- CPD Dummy
 - Child seat and restraint system (CRS)
 - Radar absorber
 - EuroNCAP blanket
 - Control and supply box
 - Battery and charger
 - Optimized absorber materials