

## M=BUS Pro Active Terminator

Last participant of the M=BUS line that monitors the signal quality and integrity of the entire bus.

- | Active termination of one M=BUS line
- | Space saving installation underneath the M=BUS Pro Logger



### TECHNICAL SPECIFICATIONS

Dimensions (L x W x H)	80 mm x 34 mm x 11 mm
Weight	39 g
Signal termination	Active
M=BUS connectors	MMCX female
Operating temperature	0...50 °C
Shockproof	200 G @ 10 ms 1,000 G @ 1 ms
Humidity range	10...70 % RH

- Scope of supply**
- | M=BUS Pro Active Terminator
  - | M=BUS standard coaxial cable
  - | Mounting screws

- Required equipment**
- | M=BUS Ethernet Gateway or M=BUS USB Gateway
  - | CrashSoft control software

- Options**
- | M=BUS Pro Analog Logger
  - | M=BUS Pro Digital Logger
  - | M=BUS Pro Mounting Plate

### MOUNTING

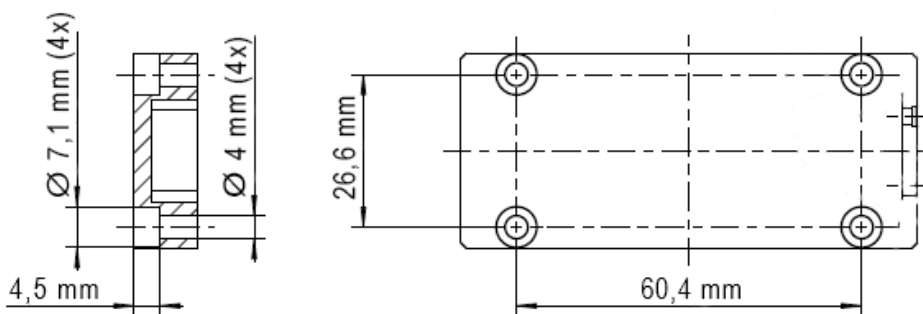


Figure 1: Hole pattern for mounting