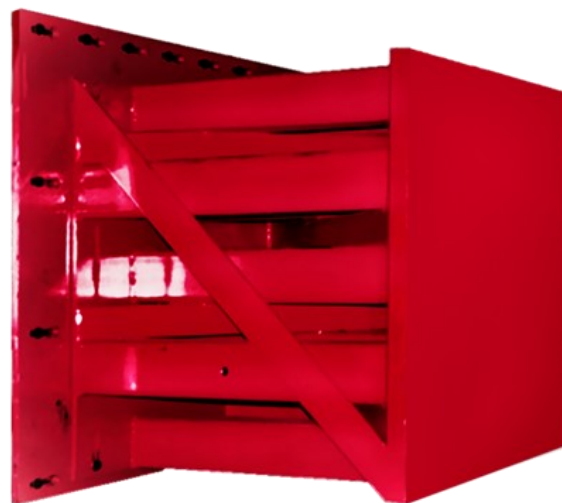


Fixed barrier for frontal offset tests according to the following regulations:

- Euro NCAP, ANCAP, C-NCAP, KNCAP, Latin NCAP, JNCAP, ASEAN NCAP
- IIHS
- ECE R94
- FMVSS 208
- EEVC WG 11
- GB/T 20913-2007 (China)
- Art 18 (Japan)
- AIS-098 (India)
- ADR 73/00 (Australia)



TECHNICAL SPECIFICATIONS

Weight	917 kg
Dimensions (L x W x H)	1,200 mm x 1,140 mm x 800 mm
Impact plate compatibility	Threaded holes / T-grooves with grid pattern 100 mm x 100 mm (M16) (custom sizes available)

Scope of supply ▪ ODB Offset Barrier

Options ▪ Instrumented ODB Offset Barrier with M=WALL Load Cells

Fixed barrier for frontal crash tests with a 25 % overlap according to IIHS test protocol, available for both left and right hand drive.



TECHNICAL SPECIFICATIONS

Weight	2,860 kg
Dimensions (L x W x H)	1,778 mm x 2,085 mm x 1,524 mm
Impact plate compatibility	Threaded holes / T-grooves with grid pattern 100 mm x 100 mm (M16) (custom sizes available)

Scope of supply ■ Small Overlap Barrier

Options ■ Instrumented Small Overlap Barrier with M=WALL Load Cells

Fixed barrier for pole impact tests according to the following regulations.

- Euro NCAP, ANCAP, US NCAP, KNCAP, Latin NCAP
- IIHS
- FMVSS 214
- ECE R135
- ADR 85/00 (Australia)



TECHNICAL SPECIFICATIONS

Weight (without concrete)	1,610 kg
Weight (with concrete)	1,824 kg
Dimensions (L x W x H)	2,007 mm x 1,650 mm x 2,300 (custom sizes available)
Pole diameter	254mm (custom sizes available)
Impact plate compability	Threaded holes / T-grooves with grid pattern 100 mm x 100 mm (M16) (custom sizes available)

Scope of supply ▪ Pole Barrier

Options ▪ Instrumented Pole Barrier with M=WALL Load Cells

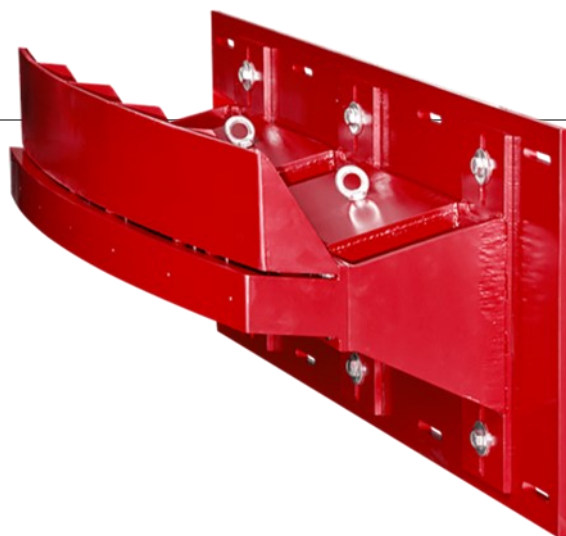
Fixed barrier for full width frontal tests according to FMVSS 208 test protocol. Suitable for both left and right hand drive.



TECHNICAL SPECIFICATIONS

Weight	3,050 kg
Dimensions (L x W x H)	1,929 mm x 2,905 mm x 1,185 mm
Impact plate compatibility	Threaded holes / T-grooves with grid pattern 100 mm x 100 mm (M16) (custom sizes available)

Fixed barrier for low-speed bumper tests according to RCAR test protocol.



TECHNICAL SPECIFICATIONS

Weight	702 kg
Dimensions (L x W x H)	558 mm x 1,900 mm x 650 mm
Impact plate compatibility	Threaded holes / T-grooves with grid pattern 100 mm x 100 mm (M16) (custom sizes available)

Fixed barrier for frontal tests with a 40 % overlap according to the RCAR test protocol. Suitable for both left and right hand drive.



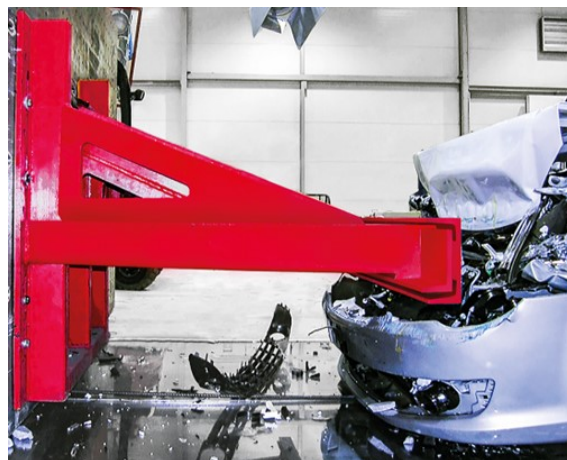
TECHNICAL SPECIFICATIONS

Weight	1,665 kg
Dimensions (L x W x H)	796 mm x 1,250 mm x 1.340 mm
Impact plate compatibility	Threaded holes / T-grooves with grid pattern 100 mm x 100 mm (M16) (custom sizes available)

Scope of supply ▪ Bumper Barrier RCAR

Options ▪ Bumper cover
 ▪ Energy absorber

Fixed barrier for commercial vehicle rear underride tests.



TECHNICAL SPECIFICATIONS

Weight	634 kg
Dimensions (L x W x H)	1,050 mm x 2,500 mm x 1,250 mm
Impact plate compatibility	Threaded holes / T-grooves with grid pattern 100 mm x 100 mm (M16) (custom sizes available)